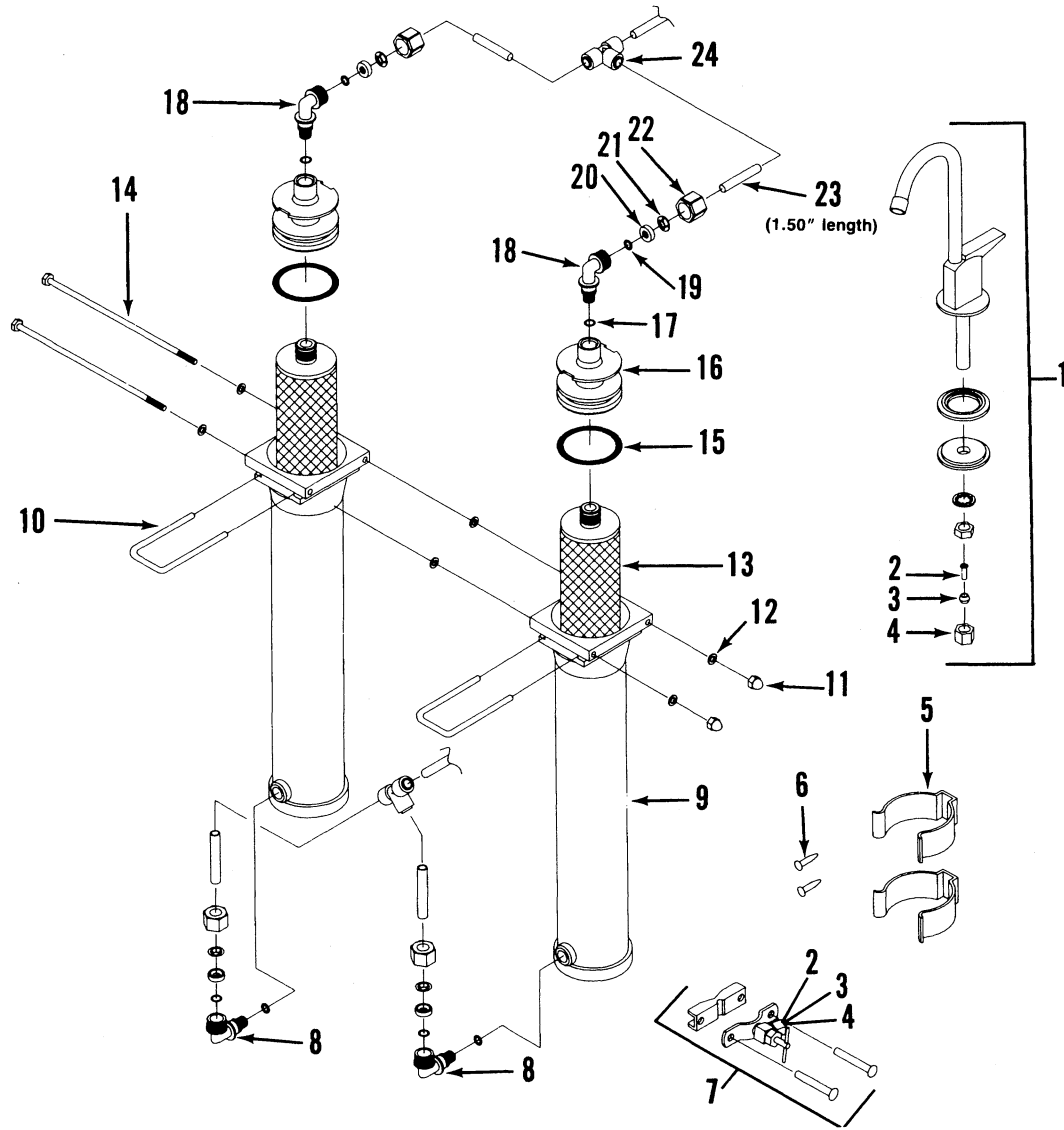


**CULLIGAN®**  
**SYSTEM 301™ WATER FILTER PARTS LIST**  
**MODELS FROM 1993**

Cat. No. 01-8818-73  
 Printed 5/93



Item No.	Part No.	Description	Qty. Req.	Item No.	Part No.	Description	Qty. Req.
1	01-0009-58	Faucet	1	14	01-0008-34	Screw #10-32 x 6" Hex. Hd.	2
2	P0-3031-62	Insert Tube .250" (MP 25)	2		01-0013-83	Tie Bolt Assem. Kit (incl. item 11,12,14)	1
3	P0-3030-96	Sleeve Delrin .250" (MP 50)	2	15	P0-3084-65	O-ring, Buna N, 1.750" x 2.125" (MP 10)	2
4	00-3323-23	Nut Compression .250"	2	16	01-0008-95	Plug, Filter-end	2
5	01-0009-57	Bracket	2	17	P0-4479-86	O-ring, EPT, .375" x .500" (MP 25)	4
6	01-0009-61	Screws, Wood #6 x .500" Rd.Hd	2	18	P1-0026-85	Elbow w/restrictor (MP 10)	2
7	01-0008-89	Valve, Piercing (incl. 2,3,4)	1	19	P0-4010-63	O-ring, .250" Parker (MP 25)	4
8	01-0009-60	Elbow Adapter .250"	2	20	01-0010-21	Spacer, .250" Parker	4
9	01-0027-05	Housing with Decal	2	21	P1-0011-41	Grab Ring, .250" Parker (MP25)	4
10	00-9097-46	Clip	2	22	01-0009-60	Nut, .250" Parker	4
11	01-0008-32	Nut, Cap #10-32	2	23	00-4021-84	Tubing, .250 OD x .170" ID	as req'd.
12	01-0008-33	Washer, Flat	6	24	P1-0026-56	Tee, .250" (MP 10)	2
13	01-0026-87	Cartridge VOC Carbon Block (MP 10)	2				
	01-0026-89	Cartridge VOC Carbon Block (MP 36)					

MP denotes a Multi-Pack Quantity